



StARD10 Polyclonal Antibody

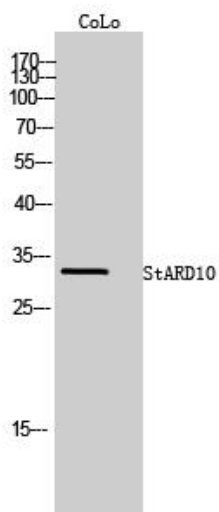
Catalog No	YP-Ab-00736
Isotype	IgG
Reactivity	Human;Mouse;Rat
Applications	WB;ELISA;IHC
Gene Name	STARD10
Protein Name	PCTP-like protein
Immunogen	Synthesized peptide derived from the Internal region of human StARD10.
Specificity	StARD10 Polyclonal Antibody detects endogenous levels of StARD10 protein.
Formulation	Liquid in PBS containing 50% glycerol, 0.5% BSA and 0.02% sodium azide.
Source	Polyclonal, Rabbit,IgG
Purification	The antibody was affinity-purified from rabbit antiserum by affinity-chromatography using epitope-specific immunogen.
Dilution	WB 1:500-2000;IHC-p 1:50-300; ELISA 2000-20000
Concentration	1 mg/ml
Purity	≥90%
Storage Stability	-20°C/1 year
Synonyms	STARD10; SDCCAG28; CGI-52; PCTP-like protein; PCTP-L; Antigen NY-CO-28; START domain-containing protein 10; StARD10; Serologically defined colon cancer antigen 28; StAR-related lipid transfer protein 10
Observed Band	33kD
Cell Pathway	Cell projection, cilium, flagellum . Cytoplasm . Membrane . In testis was predominantly detected at the flagella of elongated spermatids, with a strong signal also found at the tail of epididymal sperm (By similarity). Mainly cytosolic. .
Tissue Specificity	Colon carcinoma,Uterus,
Function	function:May play specific roles in sperm maturation or fertilization.,sequence caution:Various sequencing problems as well as a translation in a wrong frame.,similarity:Contains 1 START domain.,
Background	function:May play specific roles in sperm maturation or fertilization.,sequence caution:Various sequencing problems as well as a translation in a wrong frame.,similarity:Contains 1 START domain.,
matters needing attention	Avoid repeated freezing and thawing!



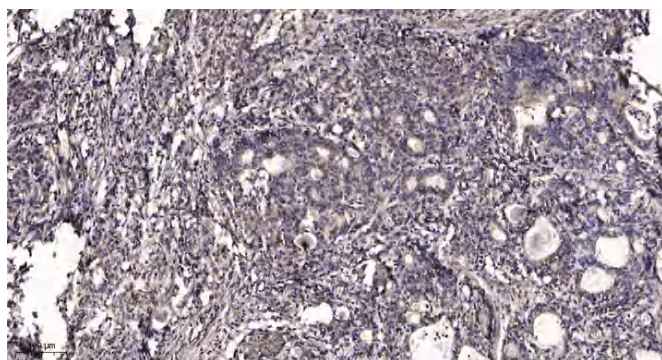
Usage suggestions

This product can be used in immunological reaction related experiments. For more information, please consult technical personnel.

Products Images



Western Blot analysis of CoLo cells using StARD10 Polyclonal Antibody



Immunohistochemical analysis of paraffin-embedded human Gastric adenocarcinoma. 1, Antibody was diluted at 1:200(4° overnight). 2, Tris-EDTA,pH9.0 was used for antigen retrieval. 3,Secondary antibody was diluted at 1:200(room temperature, 45min).